



2



2



1

PRICE GUIDE: Under Offer

'Fraser' Unit - Offering Location, Lifestyle and Outlook

Conveniently located on one of the best streets in Newington, you will find this spacious 2 bedroom apartment in the beautiful 'Fraser' building.

Featuring a large eat-in kitchen, combined living and dining areas, 2 balconies, internal laundry, built-ins in both bedrooms, 2 bathrooms (ensuite to main), security system and building pool.

Strata is \$1,312 per quarter

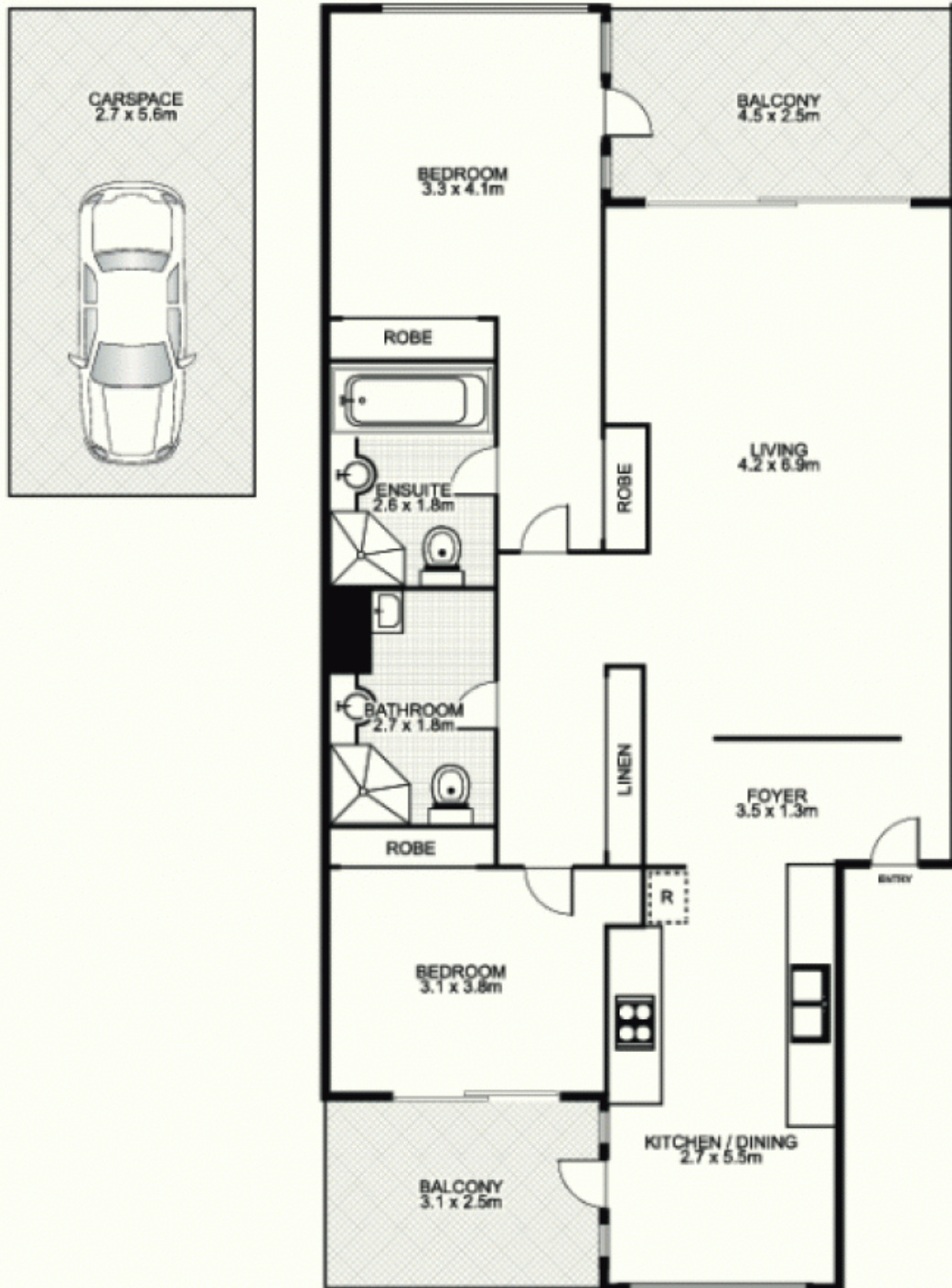


Chuck Lee
0402372286



OFFICE

16/1 Sandpiper Crescent, NEWINGTON



This floor plan is intended as a guide only. Layout dimension are approximate only. No representation or warranty of any nature whatsoever are given or intended. Any person using this information should rely on their own enquiries.

APPROX. TOTAL AREA: 122.4m²



OFFICE