



PRICE GUIDE: Under Offer

## Under Offer: Perfect Proximity...Double Car Space & Storage

Situated in a sought after location in Newington, this lovely top floor parkside unit offers 2 double bedrooms in near-new condition plus the added bonus of two car spaces and storage room in the garage. Featuring a large combined dining and living area which flows out to your sunny main balcony. Enjoy cooking in the gourmet eat-in kitchen with quality appliances and cupboard space.

There is an additional balcony off the kitchen and 2nd bedroom which fills the rooms with natural light. There are well appointed bathrooms (ensuite to main), mirrored built-in wardrobes, internal laundry, air conditioning, one secure carspace, alarm and a resort style building pool.



**Chuck Lee**  
0402372286

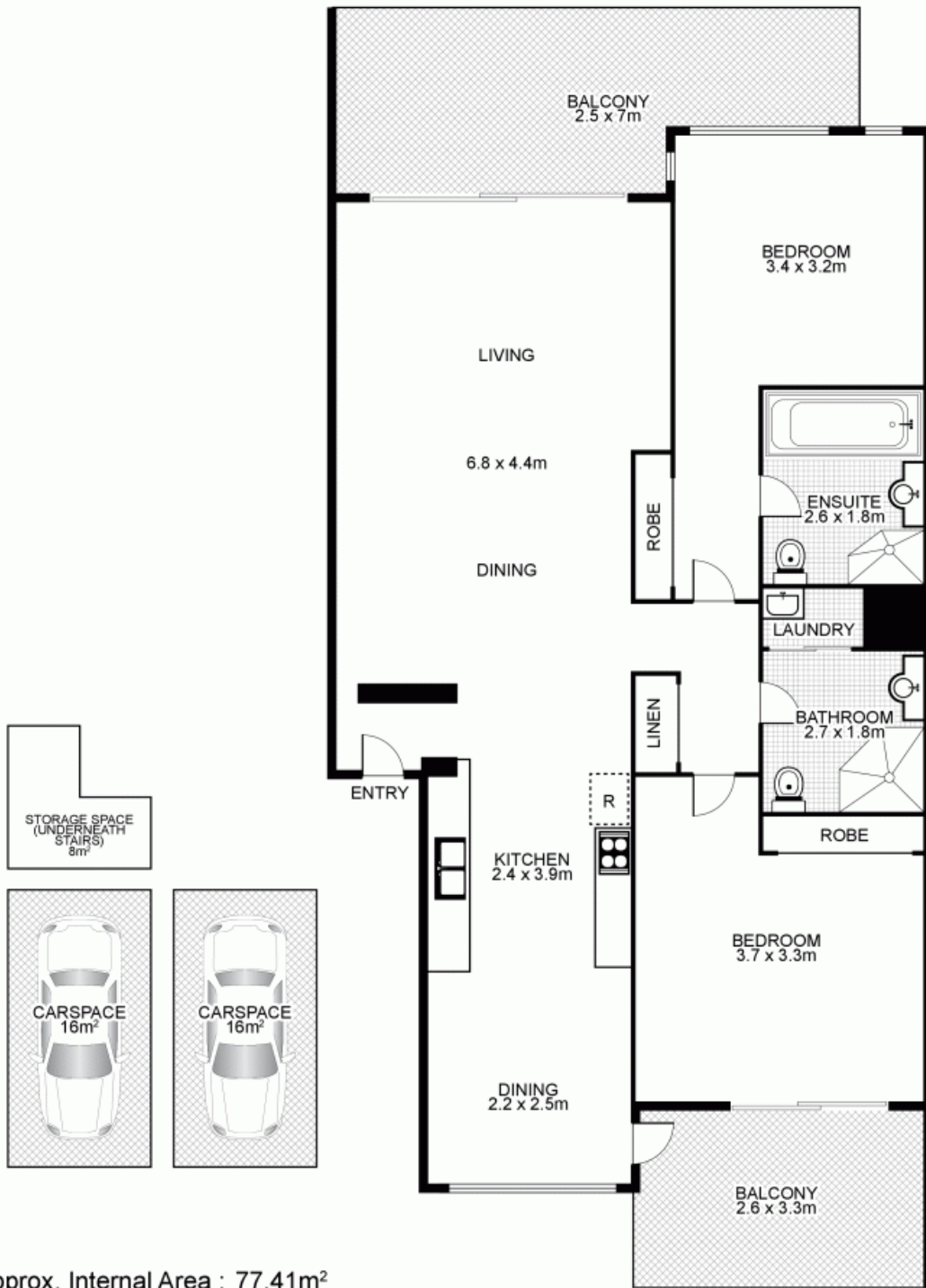


**Matthew Hamilton**  
0412253385



OFFICE

# 17/5 Sandpiper Crescent, NEWINGTON



Approx. Internal Area : 77.41m<sup>2</sup>



This floor plan is intended as a guide only. Layout dimension are approximate only. No representation or warranties of any nature whatsoever are given or intended. Any person using this information should rely on their own enquiries.



OFFICE