



2



2



1

PRICE GUIDE: \$720,000.00

## Another Outstanding Result: Another Proud New Owners

Offering a lifestyle of convenience and comfort.

This contemporary 2 bedroom apartment is set within the well regarded Greenwood boutique complex. The property brings the perfect mix of design, location and quality to the attractive, sought-after area of Newington. Relax in spacious living and dining areas, enjoy cooking in your upgraded gourmet kitchen and entertain family and friends on your picturesque private balcony.

Within easy walking distance to shops, transport, parks and the local primary school, this designer apartment offers a sleek retreat and low maintenance lifestyle perfect for downsizers, investors and families alike.

Highlights include:

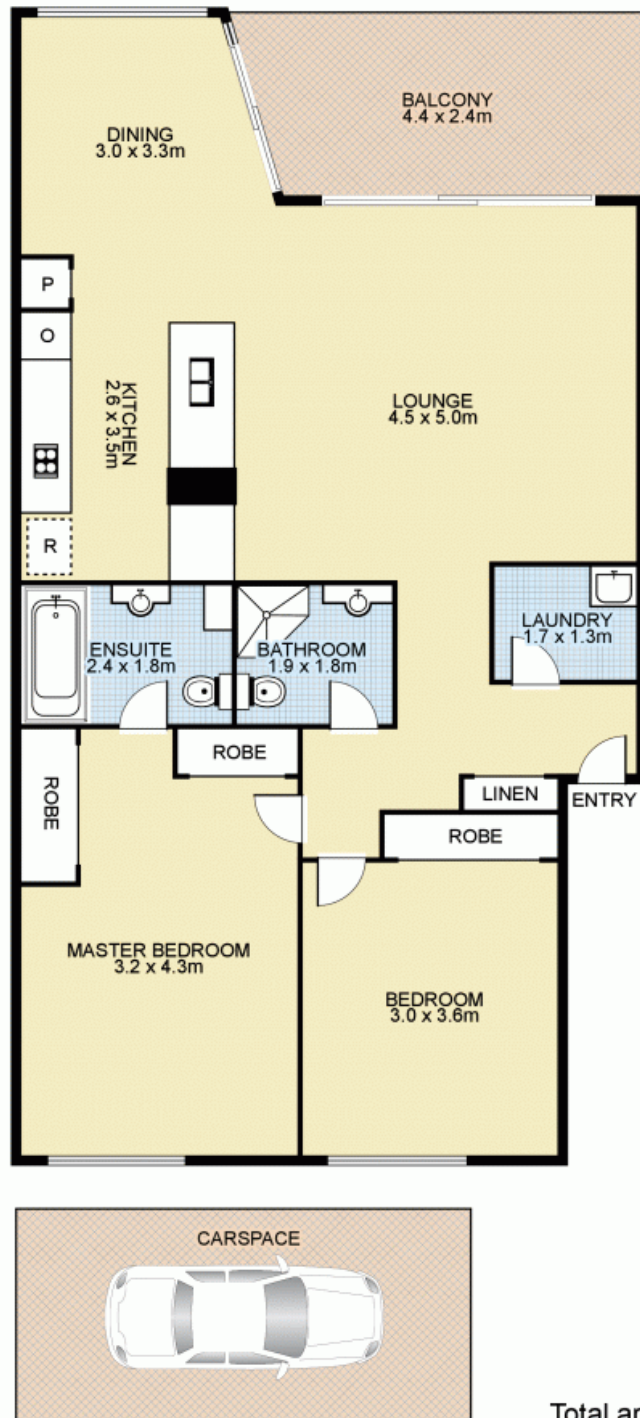
- North east facing top floor unit filled with natural light
- Beautiful park/district views with city skyline glimpses



**Chuck Lee**  
0402 372 286



OFFICE



Total area: 115m<sup>2</sup>  
 Internal: 92m<sup>2</sup>  
 Balcony: 9m<sup>2</sup>  
 Carspace: 14m<sup>2</sup>



11/3 Nurmi Avenue, NEWINGTON



This floor plan is intended as a guide only. Layout dimensions are approximate only. No representations or warranties of any nature whatsoever are given or intended. Any person using this information should rely on their own enquiries. Floor Plans by SURROUNDPIX.



OFFICE