



**5 Moulton Avenue Newington NSW**

4  3  2 

Located in a tightly held, whisper quiet street in the heart of Newington, this master built Mirvac home offers a rare combination of easy, low maintenance living and family convenience.

**Type** : House  
**View** : <https://www.nvre.com.au/6256202>

Split over two levels, this home offers 4 spacious bedrooms, including a master retreat with ensuite and walk-thru wardrobe. The modern eat-in kitchen flows seamlessly to a covered entertaining area complete with pizza oven, built-in BBQ and fully fenced level lawn.

- Highlights include:
- . Beautifully presented four bedroom home
  - . A special floor plan perfect for a larger family
  - . Spacious lounge with custom office space

[For full version visit the website](https://www.nvre.com.au)

Internal Floor Area : 231 Sqm  
 External Floor Area : 40 Sqm  
 Total Floor Area : 271 Sqm



Ground Floor



First Floor



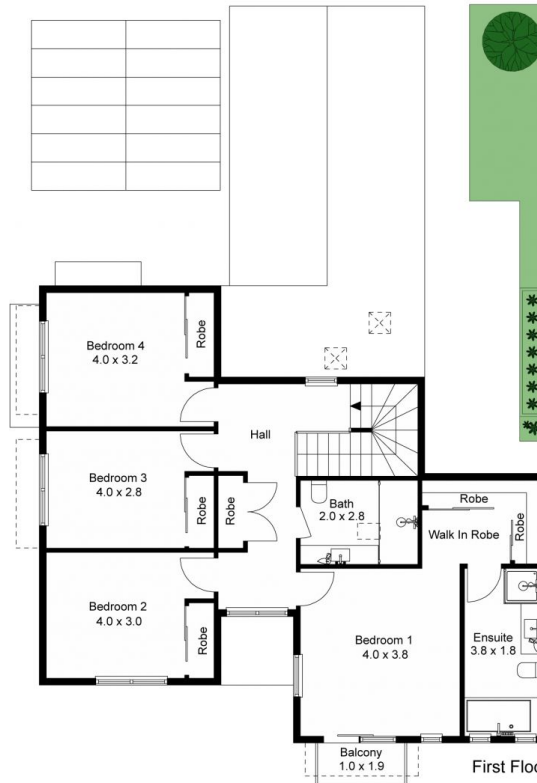
The floor plan is not to scale; measurements are indicative and in metres. All features included in this 3D plan are for inspiration purposes only. This is not an exact replica of the property or the position of exterior elements. Plans should not be relied on. Interested parties should make and rely on their own enquiries.

Produced by **DIAKRIT**

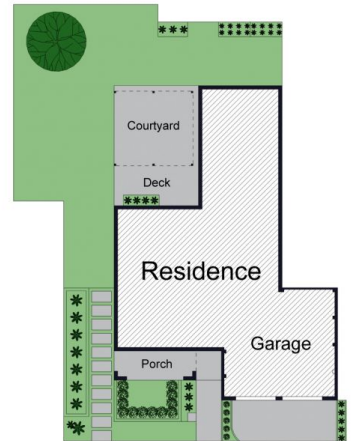
Internal Floor Area : 231 Sqm  
 External Floor Area : 40 Sqm  
 Total Floor Area : 271 Sqm



Ground Floor



First Floor



Site Plan



The floor plan is not to scale; measurements are indicative and in metres. Exterior elements are not in position. Plans should not be relied on. Interested parties should make and rely on their own enquiries.

Produced by **DIAKRIT**