



2



2



1

PRICE GUIDE: DEPOSIT TAKEN

Idyllic Sunny Top Floor Apartment with Modern Interiors

Nested within a leafy bush setting and located within walking distance to Newington Marketplace, cafes and shops, this immaculately presented apartment combines luxury and beautifully proportioned interiors to deliver an exceptional lifestyle retreat. The functional two-bedroom layout has been perfectly designed with a focus on quality finishes.

- ? Light-and airy free flowing living/dining area extends outdoors
- ? Streamlined eat-in kitchen with stainless appliances
- ? Bedrooms with built-ins, private main has ensuite
- ? New timber floors and carpet in bedrooms
- ? New flyscreens, window treatments & winders
- ? New ceiling fans in bedrooms, air conditioning in main living space
- ? Sleek bathrooms with new vanities, concealed internal laundry
- ? Top floor leafy setting, gas heating, ample storage, air conditioning
- ? Secure car space, intercom entry, outdoor pool for residents

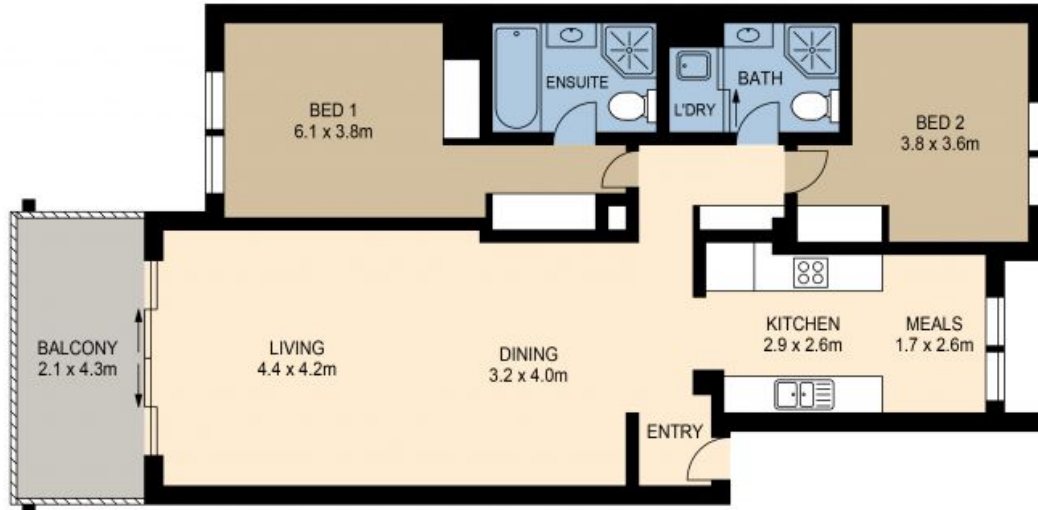


Moxuan [Jeremy] Gong & Suk-Jae [Jae] Yang
0433 568 390



OFFICE

12/19 PEARCE AVENUE, NEWINGTON



www.assetphotographers.com.au



Please note these measurements are approximate only. The plans is intended as a rough guide for illustrative purpose. It is not warranted or guaranteed to be correct nor it is part of the sale or rental contract



OFFICE