



3



2



1

PRICE GUIDE: \$1,610,000.00

## Ideal family home in one of Newington's finest streets

Combining a functional floor plan, this light filled three bedroom home boasts bright open plan living and entertaining areas, a contemporary kitchen with Miele appliances and a casual meals/family area that opens to your private alfresco courtyard.

Additional features of the property include generous size bedrooms with built-ins, oversize master retreat with ensuite and walk-in wardrobes, modern bathrooms, auto garage with internal access, ducted air-conditioning, oversize laundry room and plenty of storage space throughout!

Located on one of the most picturesque streets in Newington, the home is only minutes from school, shops, cafes, transport and the award-winning facilities of Sydney Olympic Park.



**Chuck Lee**  
0402 372 286

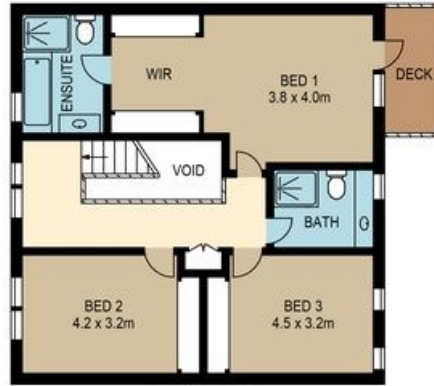


OFFICE

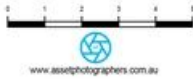
33 TOOTH AVENUE, NEWINGTON



GROUND FLOOR



FIRST FLOOR



Please note these measurements are approximate only. The plans are intended as a rough guide for illustrative purpose. It is not warranted or guaranteed to be correct nor is it part of the sale or rental contract.



OFFICE