



3



3



2

**PRICE GUIDE:** DEPOSIT TAKEN \$930 PER WEEK

## DEPOSIT TAKEN!

Penthouse Apartment with Sweeping Views

This Wow-factor maisonette apartment showcases contemporary flair throughout with impressive proportions, a light-filled two-level layout and panoramic views over the surrounding area. Set on the top floor of a quality security building, it offers a fresh and airy living space with a flowing floorplan that takes full advantage of natural light and the elevated outlook.

Features Include:

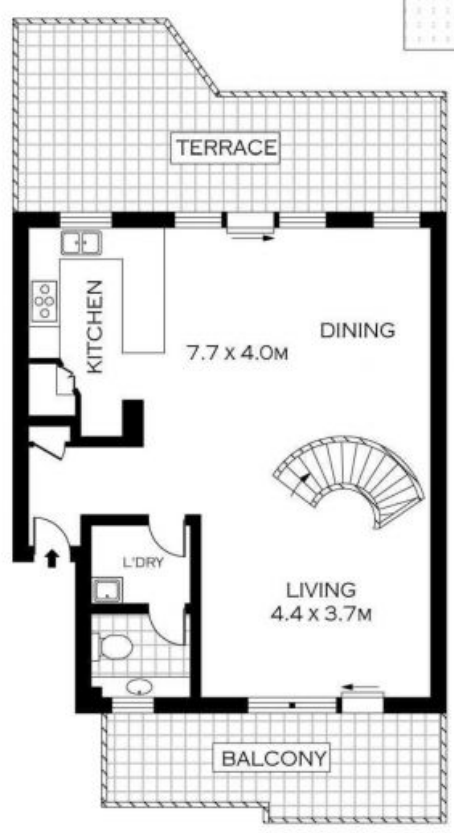
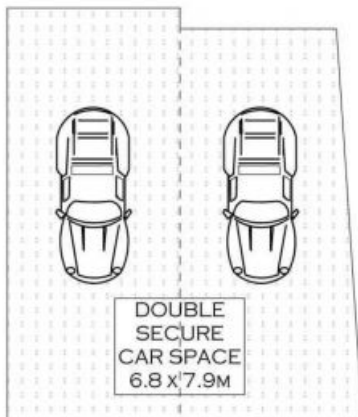
- Elevated panoramas that stretch to Harbour Bridge glimpses
- A wide entertainment terrace that flows off the living space
- Rich polished flooring and LED lighting
- Three upper-level bedrooms with mirror built-ins
- Master bedroom with ensuite & private balcony
- Double carspace with internal access



**Moxuan [ Jeremy ] Gong Suk-Jae [ Jae ] Yang**  
0433 568 390



OFFICE



THIRD FLOOR



TOP FLOOR

INT : 135.45M<sup>2</sup>



PLANS SHOWN ONLY INDICATIVE OF LAYOUT. DIMENSIONS ARE APPROXIMATE.  
Floor plans by [www.remaustralia.com](http://www.remaustralia.com)  
Ref No: 10992

6/3 NURMI AVENUE

NEWINGTON



OFFICE