

4



3



2

PRICE GUIDE: \$1,905,000.00

Area: 316 m2

Picture Perfect Family Residence near the Park

Combining a functional floor plan with the best in contemporary living, this light filled four bedroom home has the Wow factor. Bright open plan living and entertaining, sleek kitchen with high-end appliances, separate dining and lounge open to a large entertaining patio and garden.

Highlights include:

- * Four generous size bedrooms with built-ins
- * Master retreat with renovated ensuite
- * Covered pergola with extending paving, plus large grass area at back
- * Renovated 2nd bathroom, powder room and laundry
- * New kitchen and appliances with large meals/family area
- * Double garage with roller door and storage
- * Air-conditioning, timber floors, plush carpet in bedrooms and lounge



Chuck Lee
0402 372 286

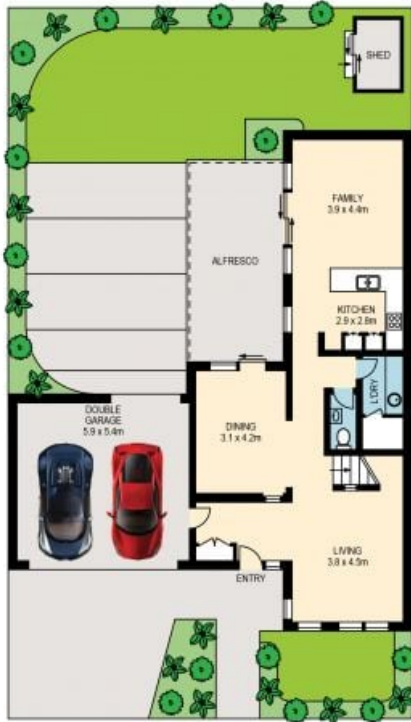


Matthew Hamilton



OFFICE

13 DAVIES STREET, NEWINGTON



Please note these measurements are approximate only. The plans are intended as a rough guide for illustrative purposes. It is not warranted or guaranteed to be correct nor is it part of the sale or rental contract.



OFFICE