



4



3



2

**PRICE GUIDE:** \$1,920,000.00

Area: 373 m2

## Spacious Family Home with heaps of Potential!

This spacious family home delivers inspiring entertaining interiors and family excellence. Framed by gardens and a privacy wall, the home provides distinct living & entertaining zones, serviced by a gourmet kitchen and 4 bedrooms with built-in wardrobes. Enjoy an easy flow between inside and out. Parents will appreciate the spacious master retreat with a walk-in wardrobe, ensuite, and balcony with district garden views.

### Accommodation Features:

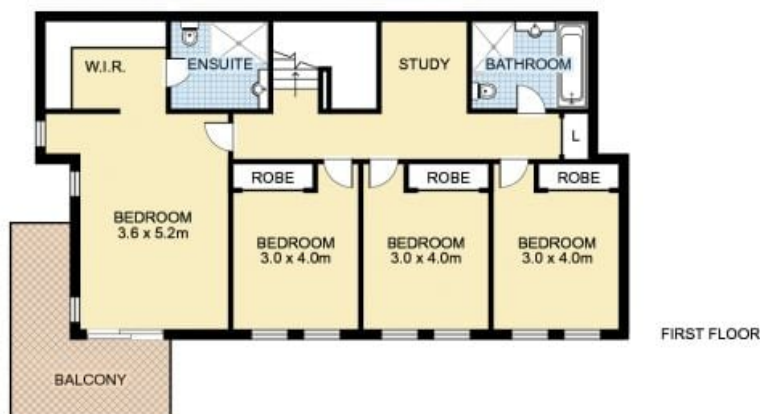
- \* Generous proportions and light-filled throughout
- \* Dual-level living ideal for growing families
- \* Functional floorplan with bonus study/media area off bedrooms
- \* Spacious living and dining room with timber floors
- \* Open plan kitchen with adjoining family room
- \* Four generous bedroom suites all fitted with built-in robes
- \* Master retreat with ensuite, walk-in robe, and balcony
- \* X-tra large storage closet in the foyer, plus under stairs
- \* Set high and screened by established garde



**Dorothy Vincent**  
0451244617



OFFICE



36 Roycroft Avenue, NEWINGTON



This floor plan is intended as a guide only. Layout dimensions are approximate only. No representations or warranties of any nature whatsoever are given or intended. Any person using this information should rely on their own enquiries. Floor Plans by SURROUNDPIX.



OFFICE