



4



3



2

**PRICE GUIDE:** Deposit Taken - \$1250 Per Week

## Modern Family Entertainer Offers Stylish Interiors & Outdoor Oasis

One of Newington's most desirable four bedroom homes, 12 Thompson Avenue beautifully blends modern comforts and quality enhancements to offer a family sanctuary and entertaining backyard to unwind and entertain with family and friends. Its generous floor plan works perfectly for family life including a private master retreat plus three spacious bedrooms.

Highlighted features include:

- \*New flooring throughout and freshly painted interiors
- \*Australian spotted gum hybrid floors on ground level
- \*Expansive kitchen with stone bench tops & modern appliances
- \*Ducted air conditioning throughout; Security screen doors
- \*Fully landscaped with covered pergola plus additional side yard
- \*Easy care gardens and new BBQ included for outdoor grilling
- \*New plush carpet upstairs in neutral colour for comfort

A prized corner block private setting, this



**Moxuan ( Jeremy ) Gong**  
0433 568 390

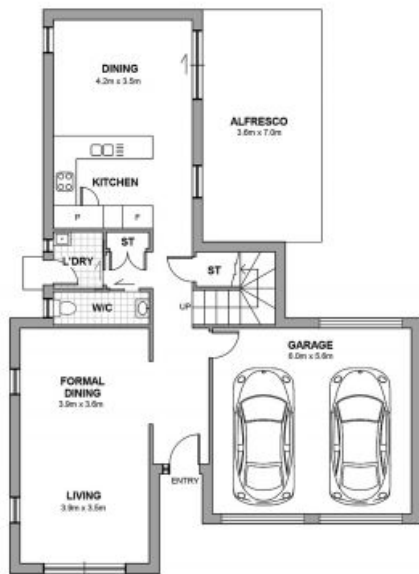


**Dorothy Vincent**  
0451244617



OFFICE

APPROXIMATE AREAS	
INTERNAL	210 sqm
SITE	340 sqm



GROUND FLOOR



FIRST FLOOR



FLOOR PLAN

## NEWINGTON 12 THOMPSON AVENUE



Scale in metres. Indicative only. All information contained herein is obtained from sources we believe to be accurate. We cannot guarantee its accuracy. Interested persons should make and rely on their own enquiries.



OFFICE