



**18/9 Blaxland Avenue Newington NSW**

2  2  1 

Conveniently positioned on the top floor of the 'Barrington' complex, this light-filled North facing apartment offers leafy green outlooks from its elevated setting. The open plan layout captures the essence of low-maintenance lifestyle. Located within walking distance to local shops, school and buses bound for Rhodes and Strathfield station.

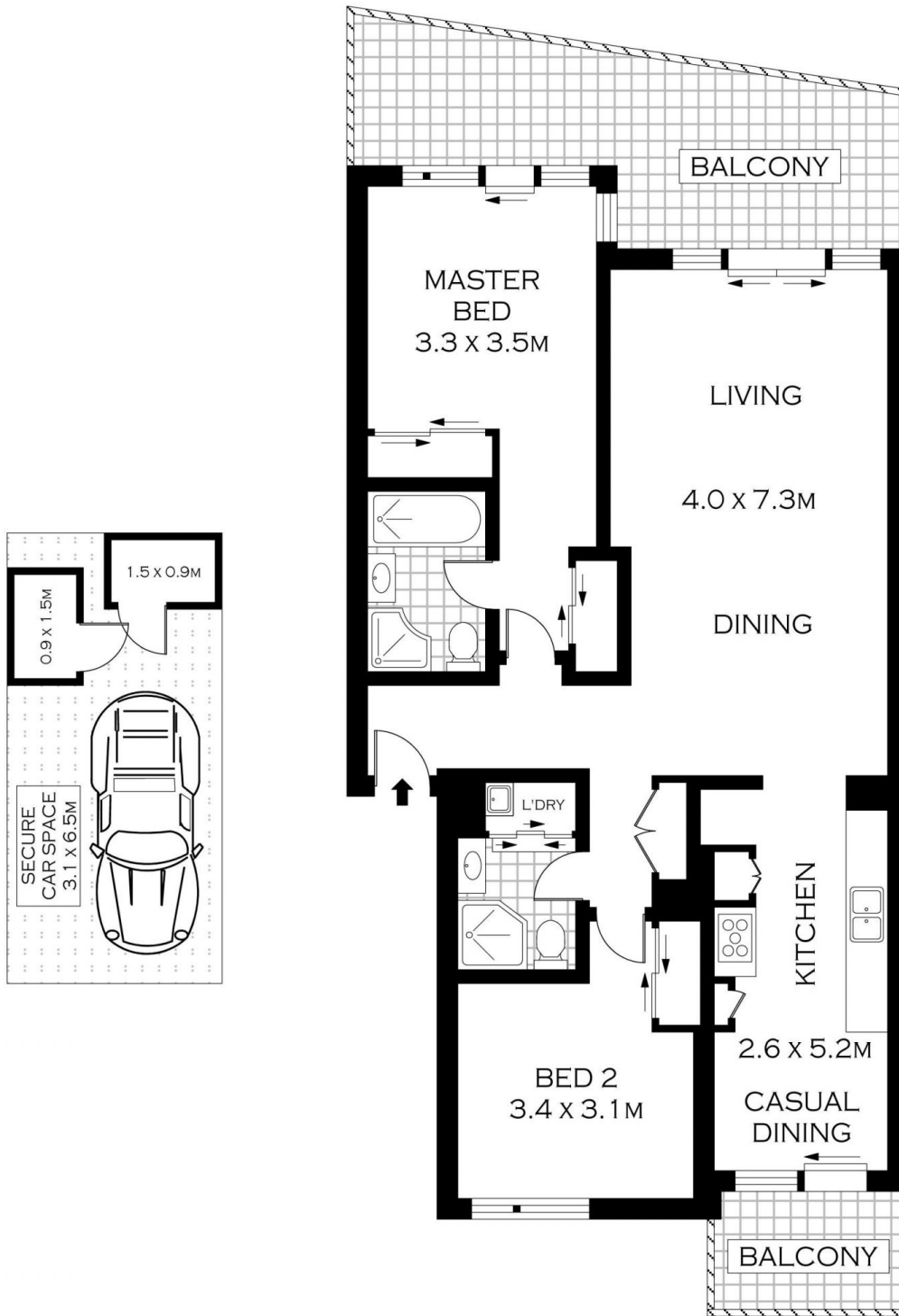
- Light filled open plan living/dining area
- Timber floors throughout for easy care
- Gas kitchen with breakfast area and terrace
- Private top floor position with leafy outlooks
- Two spacious bedrooms with built in wardrobes
- Master bedroom with ensuite and bath
- Plenty of storage and concealed internal laundry
- Secure basement parking for residents, visitor parking

**Type** : Apartment  
**Price** : For Sale | NVRE  
**View** : <https://www.nvre.com.au/8120626>



**Dorothy Vincent**  
**9751 9000**

[For full version visit the website](https://www.nvre.com.au)



TOP FLOOR

INT : 95.41M<sup>2</sup>



SCALE (METRES)

PLANS SHOWN ONLY INDICATIVE OF LAYOUT. DIMENSIONS ARE APPROXIMATE.  
 Floor plans by [www.remaustralia.com](http://www.remaustralia.com)  
 Ref. No: 12265

18/9 BLAXLAND AVENUE

NEWINGTON