



12 Thompson Avenue Newington NSW

4  3  2 

One of Newington's most desirable four bedroom homes, 12 Thompson Avenue beautifully blends modern comforts and quality enhancements to offer a family sanctuary and entertaining backyard to unwind and entertain with family and friends. Its generous floor plan works perfectly for family life including a private master retreat plus three spacious bedrooms.

Highlighted features include:

- *New flooring throughout and freshly painted interiors
- *Australian spotted gum hybrid floors on ground level
- *Expansive kitchen with stone bench tops & modern appliances
- *Ducted air conditioning throughout; Security screen doors

Type : House

View : <https://www.nvre.com.au/8142510>



Moxuan (Jeremy) Gong
02 9751 9000

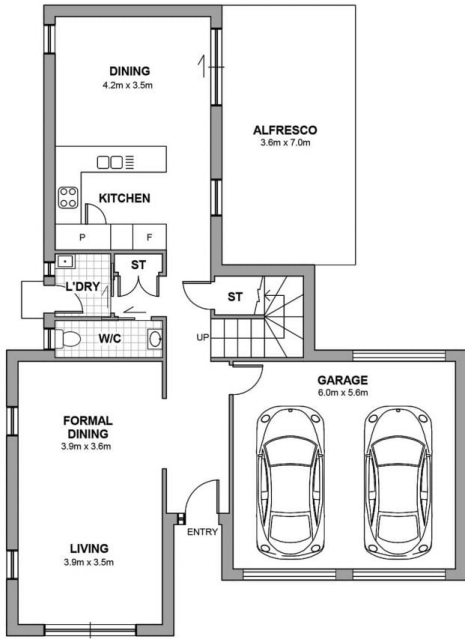


Suk-Jae (Jae) Yang
02 9751 9000

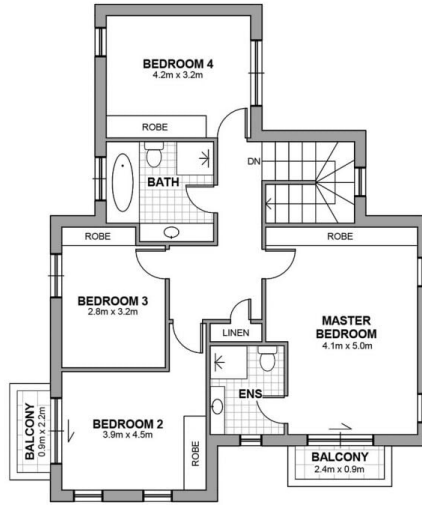
[For full version visit the website](https://www.nvre.com.au)

APPROXIMATE AREAS

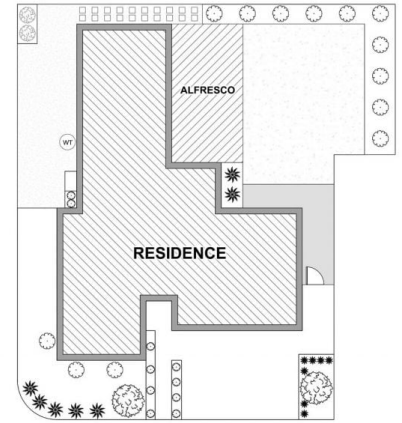
INTERNAL	210 sqm
SITE	340 sqm



GROUND FLOOR



FIRST FLOOR



FLOOR PLAN

NEWINGTON 12 THOMPSON AVENUE



Scale in metres. Indicative only. All information contained herein is obtained from sources we believe to be accurate. We cannot guarantee its accuracy. Interested persons should make and rely on their own enquiries.