



### 23 Cumberland Square Newington NSW

3  2  1 

Situated in a quiet street, this immaculate 3 bedroom home is located across from a lovely child-friendly park and within walking distance to Newington Marketplace where you will find an array of shops, cafes, eateries and medical facilities. The home has recently been refreshed to suit buyers and presents in excellent condition.

Features include:

- Sunny Parkside location
- Chevron parquet flooring
- Open plan living and dining with air conditioning
- Ducted airconditioner in upstairs
- Well-equipped kitchen with family room
- Covered outdoor entertaining courtyard
- Single automatic garage with drive-thru door

**Type** : House

**Price** : \$1100 Per Week

**View** : <https://www.nvre.com.au/8699433>



**Suk-Jae ( Jae ) Yang**  
02 9751 9000

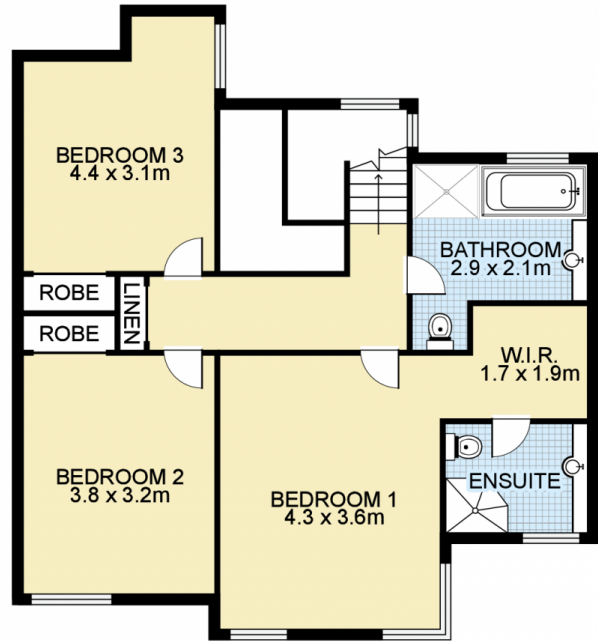


**Derick Lin**  
02 9751 9000

[For full version visit the website](https://www.nvre.com.au)



GROUND FLOOR



FIRST FLOOR

23 Cumberland Square, NEWINGTON



This floor plan is intended as a guide only. Layout dimensions are approximate only. No representations or warranties of any nature whatsoever are given or intended. Any person using this information should rely on their own enquiries. Floor Plans by SURROUNDPIX.