



### 13/3 Sandpiper Crescent Newington NSW

2 🛏 2 🚿 1 🚗

Perfectly positioned just moments from Newington Marketplace, this beautifully presented elevated ground floor apartment combines space, style, and convenience in one of the suburb's most desirable locations. Showcasing timber flooring, plantation shutters, and bright open interiors, the residence offers house-like proportions with the added benefit of a rare 5m storage room.

Privately set with two generous terraces framed by leafy surrounds, this inviting home delivers effortless indoor-outdoor living and an easy lifestyle close to parks, transport, schools, and Sydney Olympic Park.

Highlights Include:

\* Spacious open-plan living and dining flowing to large

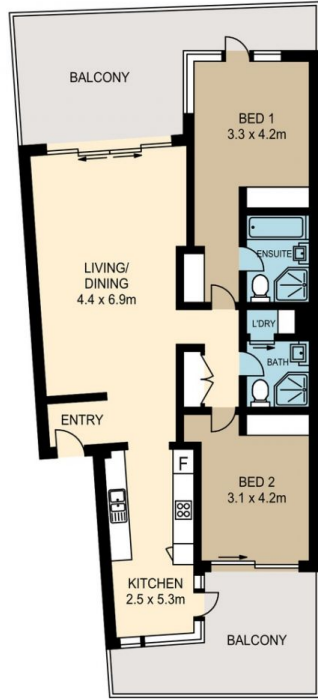
**Type** : Apartment  
**Price** : Contact Agent | Dottie 0451 244 617  
**Building Size** : 153 sqm  
**View** : <https://www.nvre.com.au/8700528>



**Dorothy Vincent**  
**9751 9001**

[For full version visit the website](https://www.nvre.com.au)

13/3 SANDPIPER CRESCENT, NEWINGTON



All measurements, dimensions, areas, and layouts shown in this floor plan are approximate only and are provided for illustrative and marketing purposes. They are not to scale and may differ from the actual structure. No warranty or representation is made as to the accuracy, completeness or suitability of the information. This floor plan does not form part of any contract or offer. Asset Photographers Pty Ltd and the selling agent make no guarantees and accept no liability for any reliance placed on the floor plan by any party. Interested buyers must make their own enquiries, carry out inspections, and obtain independent advice to verify the information. Use of this plan is at your own risk.